

HAN HANDU STEEL CO., LTD.

Head Office

23-201, JoongAng Steel Complex, 46, Siheung-daero,
Geumcheon-gu, Seoul
TEL +82-2-895-3073 FAX +2-2-808-1172

Dangjin Plant (Cold Drawing)

15-132, Jobisil-gil, Songak-eup, Dangjin-si,
Chungcheongnam-do
TEL +82-41-363-5100 FAX +82-41-363-5104

Jinju Sabong Plant (Cold Drawing)

42, Saneopdanji-ro 44beon-gil Sabong-myeon, Jinju-si,
Gyeongsangnam-do
TEL +82-55-761-7801 FAX +82-55-761-7804

Jinju Ibanseong Plant (ERW)

49, Jinma-daero 2498 Beon-gil, Ibanseong-myeon, Jinju-si,
Gyeongsangnam-do
TEL +82-55-757-8911 FAX +82-55-757-8915

<http://www.handu.co.kr>

HAN

Cold Drawn Steel Tubes

Automotive & Mechanical Uses

HANDU STEEL CO., LTD.

Cold drawn tube production manufacturer, Handu Steel Co., Ltd., provides top competitiveness and best possible service to the customers by building Total System, from the best quality pipe material production to precise cold drawn steel pipe production and automobile steel pipe processing, through direct supply of drawing exclusive materials from steel mills like POSCO and HYUNDAI STEEL.



**Integrated
production
system**

HAN

ERW pipe production

**Precise cold drawn
tube production**

**Processing parts
for automotive**

Greetings

Since the establishment in 1993, Handu Steel Co., Ltd. came to stand up as a company that's recognized for top quality brand not only domestically but also in overseas by steadily devoting itself to cold drawn tube production for automobile and machine structural use.

By directly dealing with steel mills like POSCO and HYUNDAI STEEL, we've secured the best quality and competitiveness with synergy effect through integrated production system in materials (pipes) to cold drawn tube production and post component processing with systematic operation.

In Jinju Factory, where we produce our own pipe materials. Dangjin and Sabong Factory have 60,000 ton's capacity for cold drawn tube production per year and we have another processing facilities for automobile parts.

Therefore, we will do our best to secure high quality for precision cold drawn tubes, low cost basis and delivery assurance and become the best company in the world.

Thank you.

History



1993.03 •
Established Handu Steel Co., Ltd.

1993.04 •
Agency of Hyundai Hysco Co., Ltd.



1996.04 •
Producing Dangjin Cold Drawn Tube Plant



2000.12 •
Acquired QS9000/ ISO9002 Quality Management
Selected as military alternative service manufacturer



2005.11 •
Awarded presidential citation



2006.06 •
Founding Jinju ERW Plant



2007.04 •
Acquired TS16949 Certification

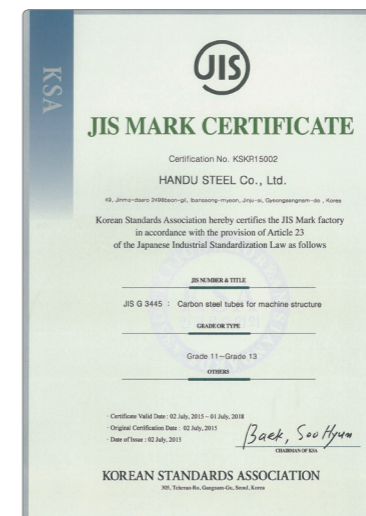
2007.05 •
Producing Jinju ERW manufacturing plant



2011.12 •
Produced 30,000 tons of cold drawn tube production per year at Dangjin Factory
Accomplished 10 million USD yearly exports



2015.01 •
Producing Sabong Cold Drawn Tube Plant
Production Capability 108,000ton Per Year (Cold Drawn Tube 60,000ton, ERW 48,000ton)
Extension of ERW Plant Capability
2015.07 •
Acquired JIS Certificate in ERW



Applications

• Cylinder Tube



• Shock absorber



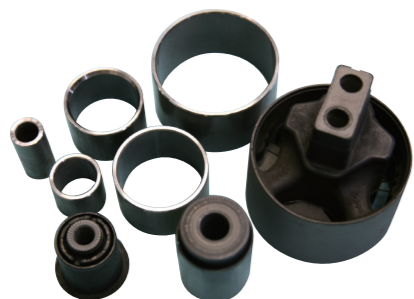
• Rack tube



• Steering Tube



• Bush



• Cam Shaft



• Safety Belt Tube, Refrigerant Body



• Door impact bar



• Hydraulic Coupler



• Furniture Cylinder Tube



• Bobbin



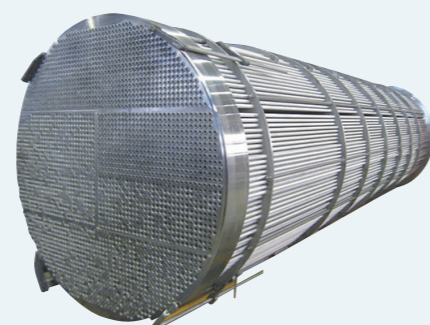
• Various Shape of Tubes



• Boiler Tube



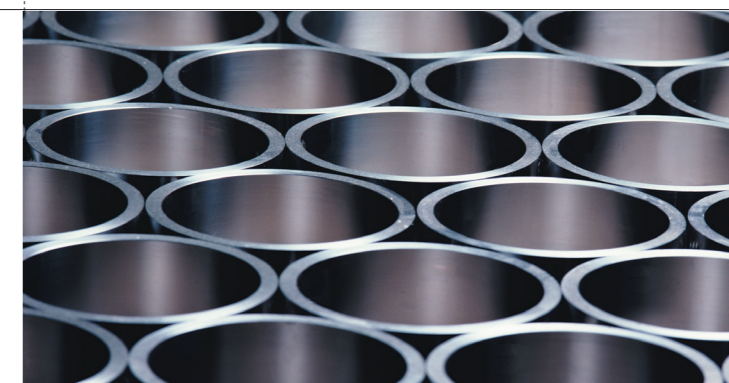
• Heat Exchanger Tube



• Fin Tube



• Hydraulic Cylinder Tube



ERW Plant

As a manufacturing factory of ERW for mother tube to cold drawn tube, stability of quality is guaranteed.

Jinju Ibanseong Plant

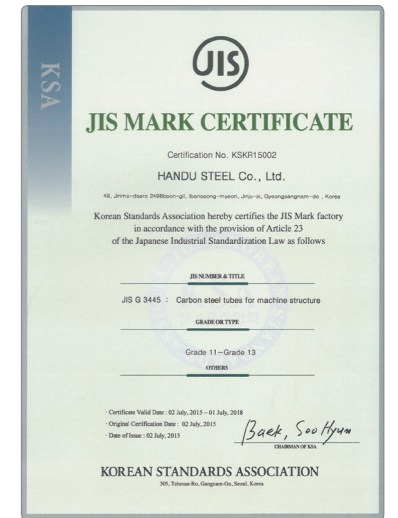


Products

- ① Tubes for Machine Structural Purposes
- ② Mother Tube of Cold Drawing
- ③ Tubes for General Structural Purposes

Range

PIPE's external diameter PIPE 외경	Thickness 두께									
	1.6	2.0	2.9	3.5	4.0	5.0	5.5	6.0	6.5	6.8
Φ 21.7										
Φ 25.4										
Φ 27.2										
Φ 31.8										
Φ 38.1										
Φ 41.5										
Φ 42.7										
Φ 48.6										
Φ 54										
Φ 60.5										
Φ 70										
Φ 74.6										
Φ 76.3										
Φ 89.1										

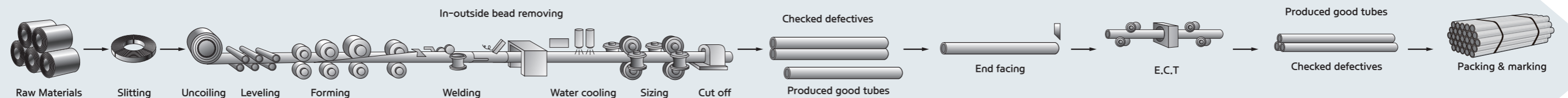


Electric Resistance Welded Carbon Steel Tubes for Automobile Structural Purposes

KS D 3598

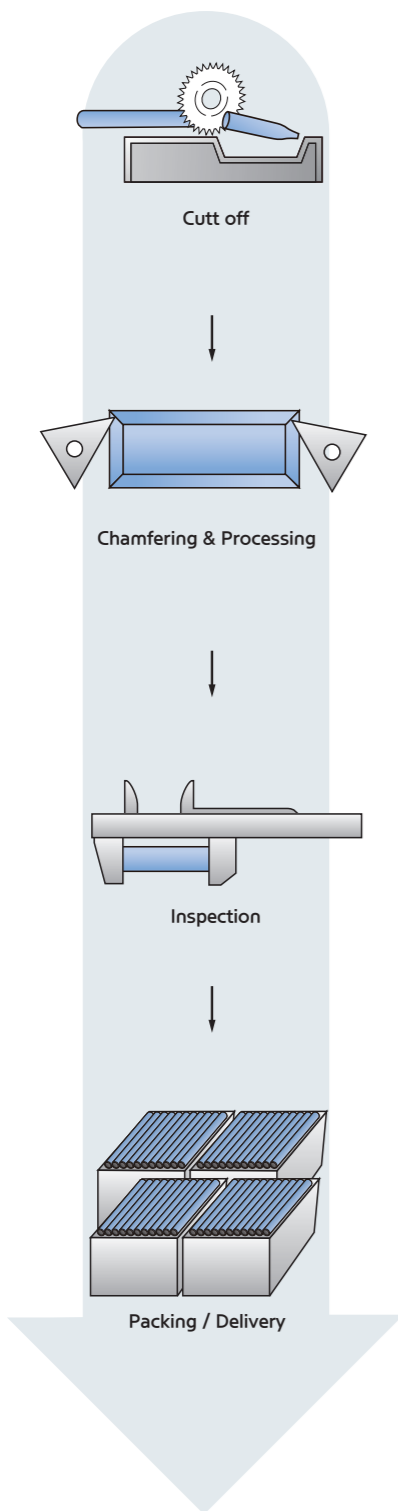
Type 종류	Code 기호	Chemical Composition (%) 화학성분					Tensile Test 인장시험			Flaring Test 압형시험	Flattening Test 편평시험	Bend Test 굽힘시험	
		C	Si	Mn	P	S	Tensile Strength N/mm ² (kg/mm ²) 인장강도	Yield Point and Yield Strength N/mm ² (kg/mm ²) 항복점 또는 내력	Elongation(%) Test Piece 11 Test Piece 12 Longitudinal 연신율(%) 11호 시험편 12호 시험편 세로방향	Size after Pressed and Flattened (D is the outer radius of a pipe) 눌러서 뺀상태의 크기 (D는 관의 바깥지름)	Distance from the Plane Table (H) (D is the outer radius of a pipe) 평판간의 거리(H) (D는 관의 바깥지름)	Bend Angle 굽힘 각도	Internal Radius (D is the outer radius of a pipe) 내측 반지름 (D는 관의 바깥지름)
G종	STAM 290GA	0.12↓	0.35↓	0.60↓	0.035↓	0.035↓	294↑(30↑)	177↑(18↑)	40↑	1.25D	½D	180°	4D
	STAM 290GB						294↑(30↑)	177↑(18↑)	35↑	1.20D	½D	180°	4D
	STAM 340G	0.20↓	0.35↓	0.60↓	0.035↓	0.035↓	343↑(35↑)	196↑(20↑)	35↑	1.20D	⅔D	90°	6D
	STAM 390G	0.25↓	0.35↓	0.30~0.90	0.035↓	0.035↓	392↑(40↑)	235↑(24↑)	30↑	1.20D	⅔D	90°	6D
	STAM 440G	0.25↓	0.35↓	0.30~0.90	0.035↓	0.035↓	441↑(45↑)	304↑(31↑)	25↑	1.15D	⅔D	90°	6D
	STAM 470G	0.25↓	0.35↓	0.30~0.90	0.035↓	0.035↓	471↑(485↑)	324↑(33↑)	22↑	1.15D	⅔D	90°	8D
	STAM 500G	0.30↓	0.35↓	0.30~1.00	0.035↓	0.035↓	500↑(51↑)	353↑(36↑)	18↑	1.15D	⅔D	90°	8D
H종	STAM 440H	0.25↓	0.35↓	0.30~0.90	0.035↓	0.035↓	441↑(45↑)	353↑(36↑)	20↑	1.15D			
	STAM 470H	0.25↓	0.35↓	0.30~0.90	0.035↓	0.035↓	471↑(48↑)	412↑(42↑)	18↑	1.10D			
	STAM 500H	0.30↓	0.35↓	0.30~1.10	0.035↓	0.035↓	500↑(51↑)	431↑(44↑)	16↑	1.10D			
	STAM 540H	0.30↓	0.35↓	0.30~1.10	0.035↓	0.035↓	539↑(55↑)	481↑(49↑)	13↑	1.05D			

Process



Handu Steel of the best material is drawn as a manufacturer of steel pipe production, as well as finishing the pipe.

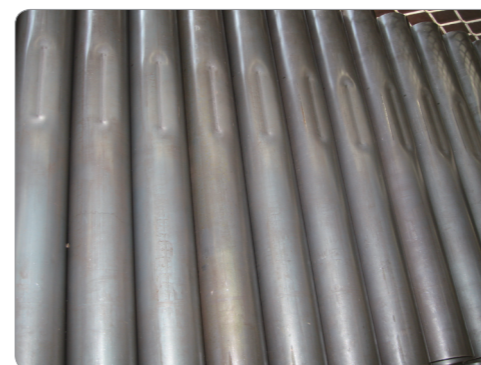
Process



Processing Equipment



Products





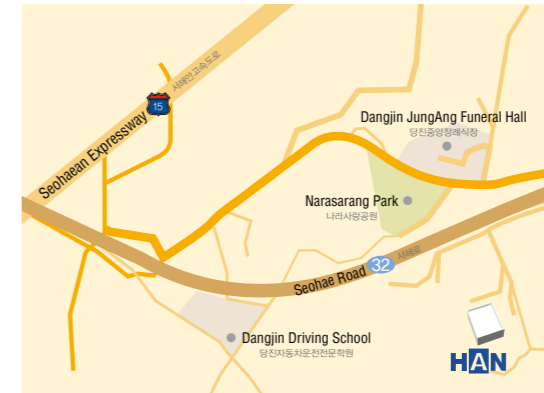
Handu Steel Company is trying our best again today with the goal of becoming 'Global No.1, the best company in the cold drawing industry!'

Business Information

Address	23-201, JoongAng Steel Complex, 46, Siheung-daero, Geumcheon-gu, Seoul
Telephone	+82-2-895-3073
Fax	+82-2-808-1172
Consultation (E-mail)	Business Part (hsteel@unitel.co.kr, hd93@unitel.co.kr)

Sketch Map

Dangjin Plant (Cold Drawing) 당진공장 (인발)



Jinju Sabong Plant (Cold Drawing) 진주 사봉공장 (인발)



Jinju Ibanseong Plant (ERW) 진주 이반성공장 (ERW)

